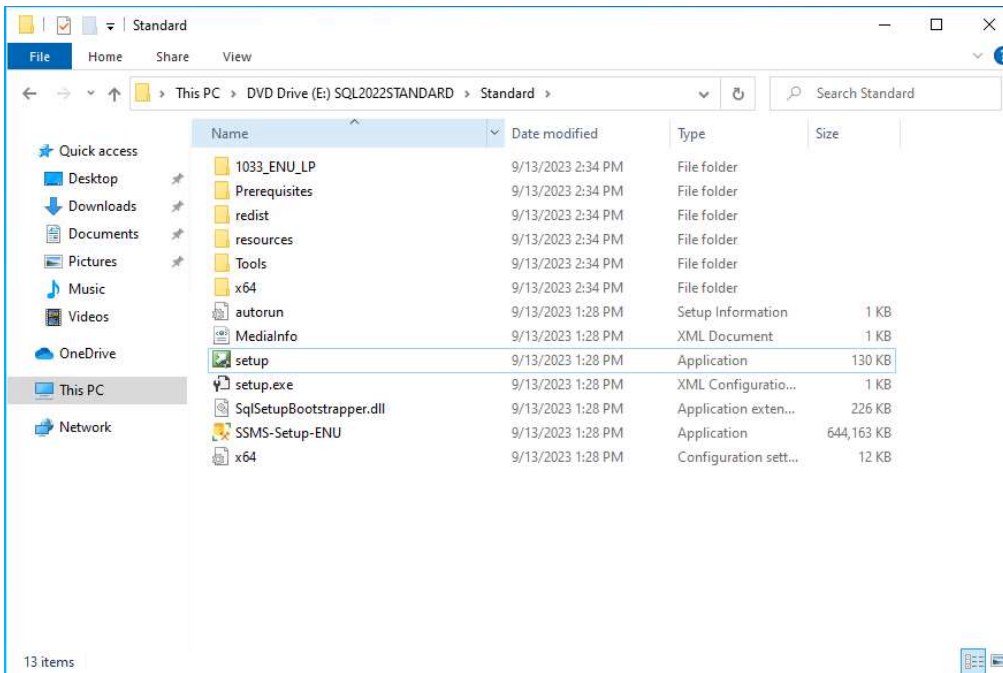
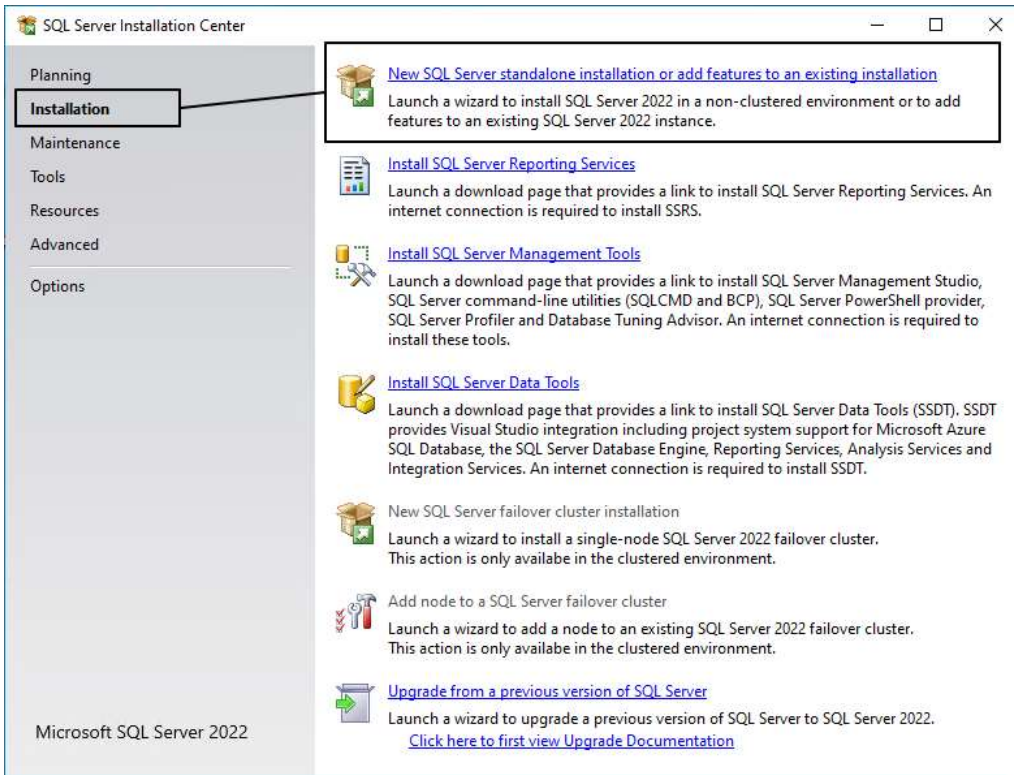


SQL Installation Steps

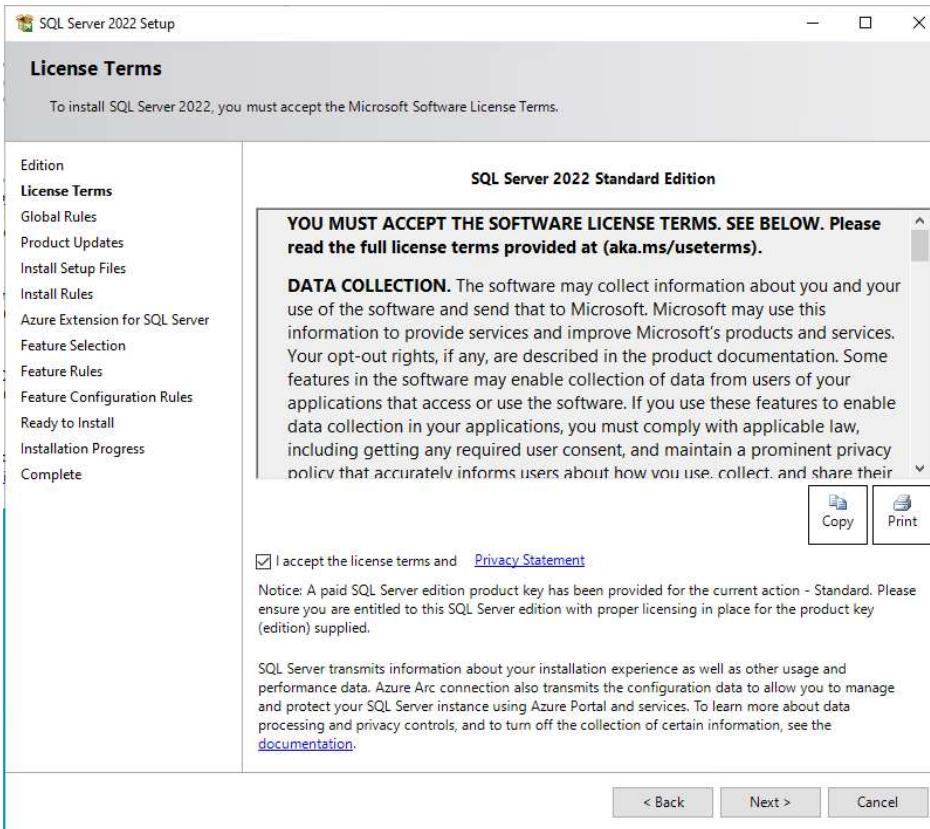
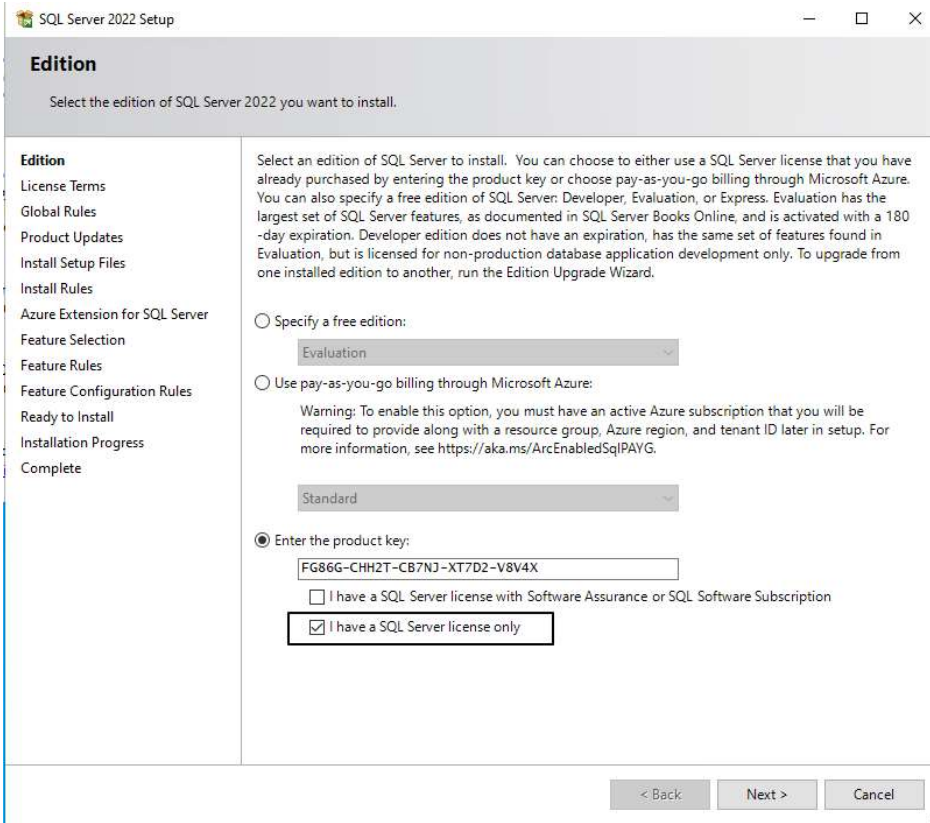
Run the setup.exe in the “Standard” folder supplied.



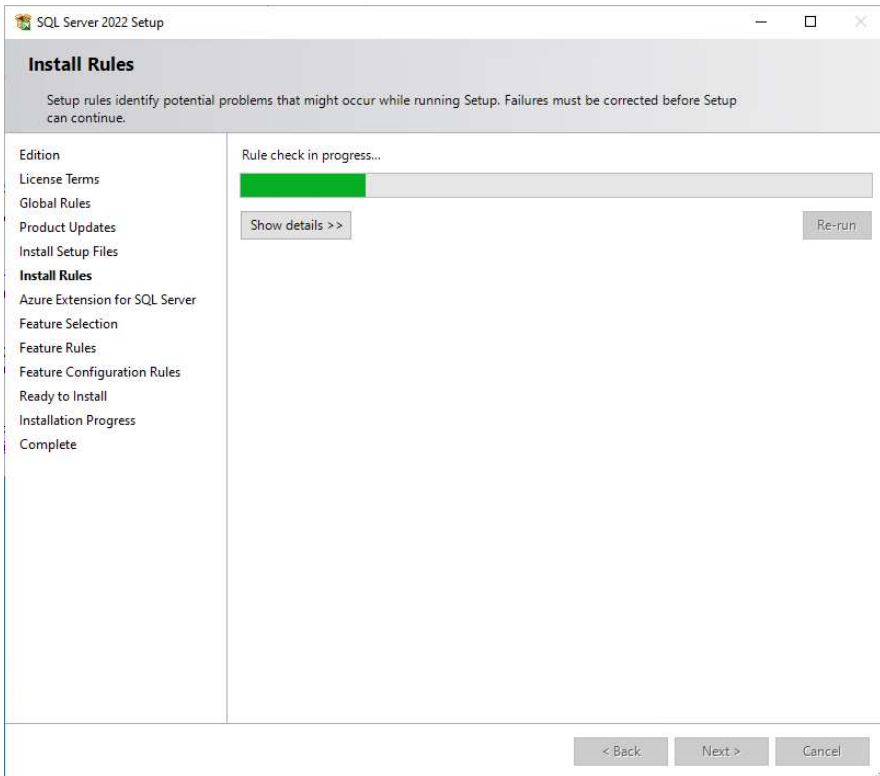
Select “Installation” in the left pane, then “New SQL Server stand-alone installation.”



Click the “I have a SQL License only” checkbox then “Next” through the license terms and product key

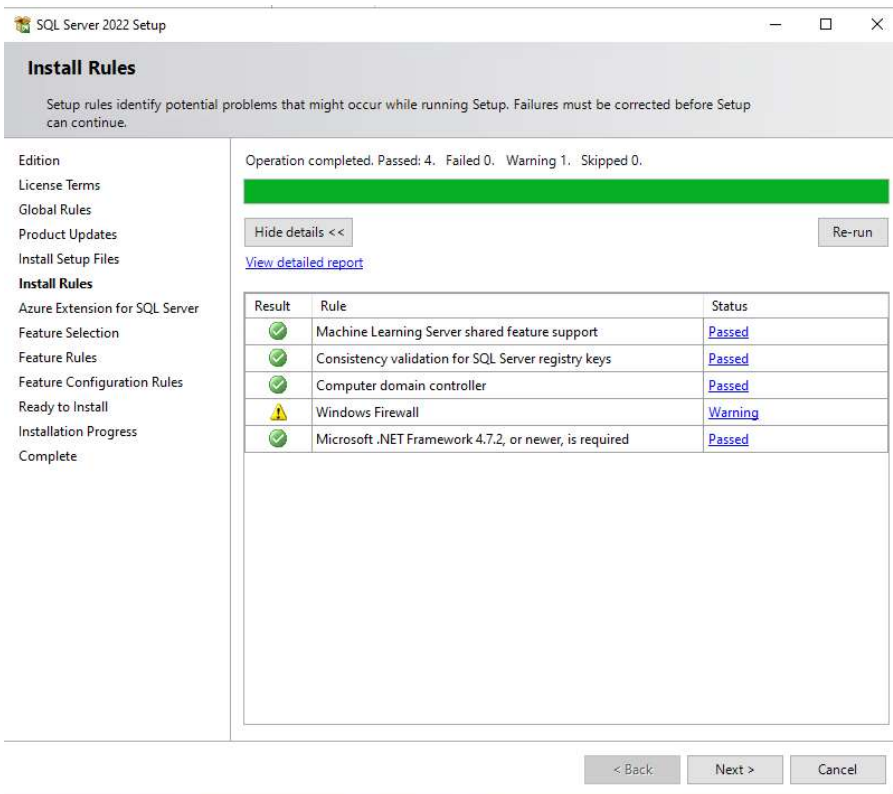


The product will begin to download updates, extract and install the setup files.



The setup will check to see if your system has the **pre-requisites for installing SQL**. **If any of the conditions are not met, you will have to resolve them before proceeding**. Additional information on resolving the problems is contained in the link in the status column.

If there are no errors click “next”



Uncheck "Azure Extension for SQL Server"

SQL Server 2022 Setup

Azure Extension for SQL Server

Azure Extension for SQL Server is required to enable Microsoft Defender for Cloud, Purview, and Azure Active Directory.

Edition
License Terms
Global Rules
Product Updates
Install Setup Files
Install Rules
Azure Extension for SQL Serv...
Feature Selection
Feature Rules
Feature Configuration Rules
Ready to Install
Installation Progress
Complete

Azure Extension for SQL Server

To install Azure extension for SQL Server, provide your Azure account or a service principal to authenticate the SQL Server instance to Azure. You also need to provide the Subscription ID, Resource Group, Region, and Tenant ID where this instance will be registered. For more information for each parameter, visit <https://aka.ms/arc-sql-server>.

Use Azure Login
 Use Service Principal

Azure Service Principal ID*

Azure Service Principal Secret*

Azure Subscription ID*

Azure Resource Group*

Azure Region*

Azure Tenant ID*

Proxy Server URL (optional)

< Back Next > Cancel

In Feature Selection check "Database Engine Services, Data Quality Client and Integration Services" then click next

SQL Server 2022 Setup

Feature Selection

Select the Standard features to install.

Edition
License Terms
Global Rules
Product Updates
Install Setup Files
Install Rules
Azure Extension for SQL Server
Feature Selection
Feature Rules
Instance Configuration
Server Configuration
Database Engine Configuration
Feature Configuration Rules
Ready to Install
Installation Progress
Complete

Looking for Reporting Services? [Download it from the web](#)

Features:

Instance Features

- Database Engine Services
- SQL Server Replication
- Machine Learning Services and Language Ext
- Full-Text and Semantic Extractions for Search
- Data Quality Services
- PolyBase Query Service for External Data

Shared Features

- Data Quality Client
- Integration Services
- Scale Out Worker

Redistributable Features

Feature description:

Includes the Database Engine, the core service for storing, processing and securing data. The Database Engine provides controlled access and rapid transaction processing and also provides rich support for sustaining high

Prerequisites for selected features:

Already installed:

- Windows PowerShell 3.0 or higher
- Microsoft Visual C++ 2017 Redistributable
- Microsoft Visual Studio Tools for Application

Disk Space Requirements

Drive C: 1223 MB required, 25354 MB available

Select All Unselect All

Instance root directory: ...

Shared feature directory: ...

Shared feature directory (x86): ...

< Back Next > Cancel

Instance Configuration

If this is a new server and no other SQL database installed this next screen will create what's called a default instance for Abeldents data Click next

If there is a previous install of SQL for another software you may need create a Named Instance for Abeldent data. Click next

The screenshot shows the 'Instance Configuration' window in SQL Server 2022 Setup. The window title is 'SQL Server 2022 Setup'. The main heading is 'Instance Configuration' with a subtitle: 'Specify the name and instance ID for the instance of SQL Server. Instance ID becomes part of the installation path.' On the left is a navigation pane with options: Edition, License Terms, Global Rules, Product Updates, Install Setup Files, Install Rules, Azure Extension for SQL Server, Feature Selection, Feature Rules, **Instance Configuration**, Server Configuration, Database Engine Configuration, Feature Configuration Rules, Ready to Install, Installation Progress, and Complete. The main area has two radio buttons: 'Default instance' (selected) and 'Named instance: *' (with a text box containing 'MSSQLSERVER'). Below these is an 'Instance ID:' text box containing 'MSSQLSERVER'. The 'SQL Server directory:' is 'C:\Program Files\Microsoft SQL Server\MSSQL16.MSSQLSERVER'. Below that is an 'Installed instances:' table with columns: Instance Name, Instance ID, Features, Edition, and Version. The table is currently empty. At the bottom are buttons for '< Back', 'Next >', and 'Cancel'.

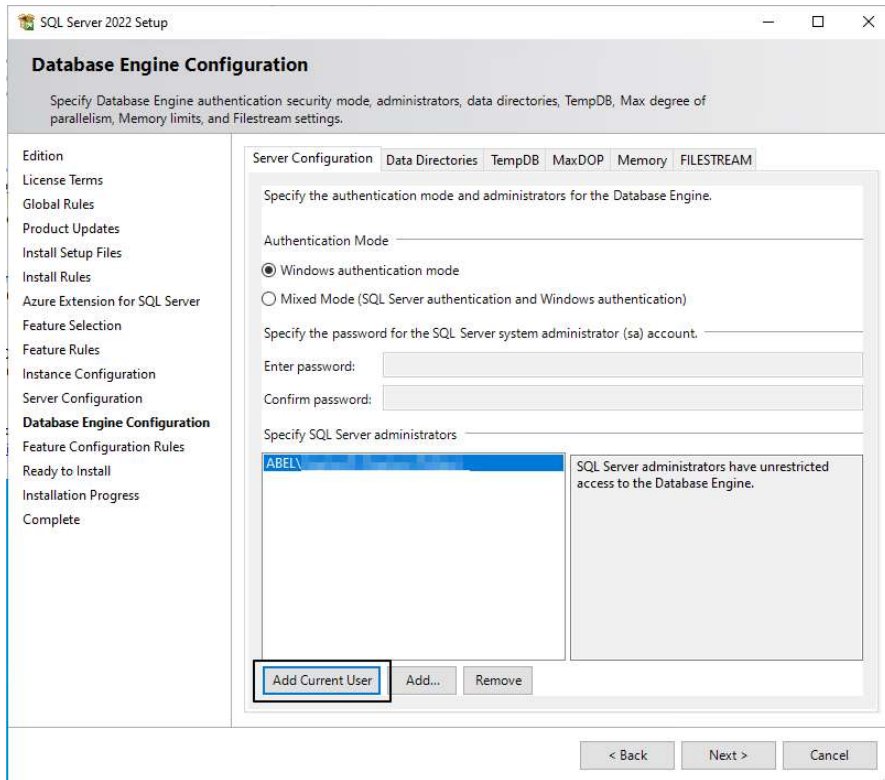
Click next

The screenshot shows the 'Server Configuration' window in SQL Server 2022 Setup. The window title is 'SQL Server 2022 Setup'. The main heading is 'Server Configuration' with a subtitle: 'Specify the service accounts and collation configuration.' On the left is a navigation pane with options: Edition, License Terms, Global Rules, Product Updates, Install Setup Files, Install Rules, Azure Extension for SQL Server, Feature Selection, Feature Rules, Instance Configuration, **Server Configuration**, Database Engine Configuration, Feature Configuration Rules, Ready to Install, Installation Progress, and Complete. The main area has two tabs: 'Service Accounts' (selected) and 'Collation'. Below the tabs is a message: 'Microsoft recommends that you use a separate account for each SQL Server service.' Below this is a table with columns: Service, Account Name, Password, and Startup Type. The table contains the following data:

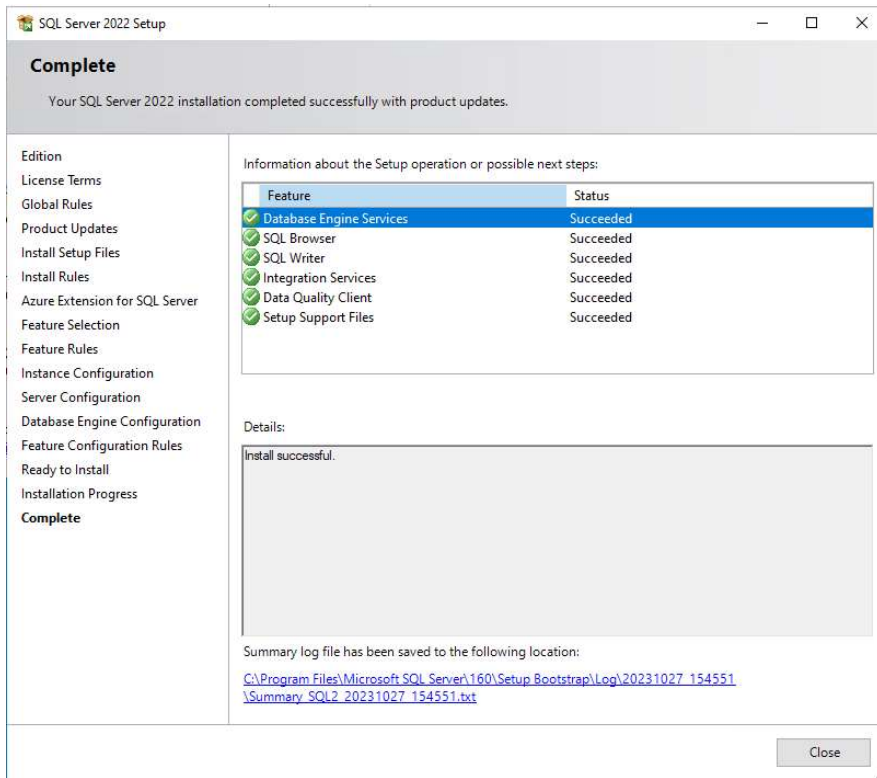
Service	Account Name	Password	Startup Type
SQL Server Agent	network service		Automatic
SQL Server Database Engine	NT Service\MSSQLSERVER		Automatic
SQL Server Integration Services 16.0	NT Service\MsDtsServer...		Automatic
SQL Server Browser	NT AUTHORITY\LOCAL ...		Disabled

Below the table is a checkbox labeled 'Grant Perform Volume Maintenance Tasks privilege to SQL Server Database Engine Service' which is checked. Below the checkbox is a text block: 'This privilege enables instant file initialization by avoiding zeroing of data pages. This may lead to information disclosure by allowing deleted content to be accessed.' Below the text is a link: '[Click here for details](#)'. At the bottom are buttons for '< Back', 'Next >', and 'Cancel'.

Click **“Add Current User”** to put the current account into the SQL Server Administrators group. Add any other accounts you want to have sysadmin SQL access.



If you have done everything correctly you should see this



install SQL Management Studio SSMS

Download and install SQL Management Studio SSMS at <https://learn.microsoft.com/en-us/sql/ssms/download-sql-server-management-studio-ssms?view=sql-server-ver16>

*****IMPORTANT*****

It is critical to review your backup process when making changes to your server. If you have replaced or updated your server, moved ABELDent to a new drive, or made any changes to existing data location please ensure your backup is updated to reflect the new location or changes.

If you subscribe to ABELDent RBS Remote Backup Service please email us at: RBS@ABELSoft.com or call us at: 800-267-ABEL (2235) ext 7 for RBS support. We will ensure your backups are modified to reflect the new location.